

# COMPACT NS630b to 1600 A

## Low Voltage Products

User manual



Merlin Gerin

Modicon

Square D

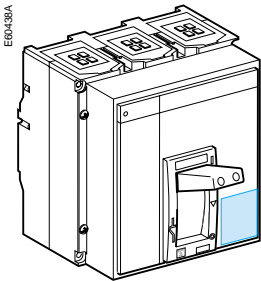
Telemecanique

# User manual for circuit breakers

## COMPACT NS630b to 1600 A

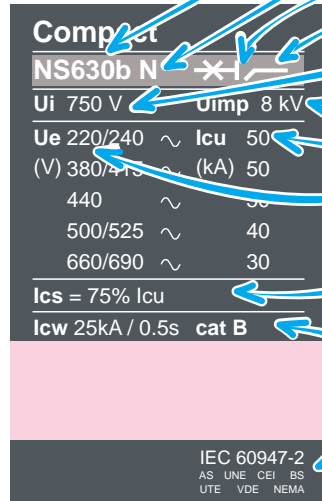
---

<b>Discovering Compact</b>	<b>2</b>
<b>Manually operated Compact with a toggle</b>	<b>4</b>
Components	4
Opening, closing, reset	5
Testing the device	6
Locking the toggle	7
<b>Manually operated Compact with a rotary handle</b>	<b>8</b>
Components	8
Opening, closing, reset	9
Testing the device	10
Locking the rotary handle	11
<b>Remote operated Compact</b>	<b>14</b>
Components	14
Opening, closing, reset	15
Locking the controls	18
<b>Compact chassis</b>	<b>20</b>
Components	20
Matching a device with its chassis	21
Racking	22
Racking	23
Locking in the "disconnected" position	24
Locking the switchboard door	26
Locking the device when the door is open	27
Locking the safety shutters	28
<b>Electrical auxiliaries</b>	<b>30</b>
Electrical diagrams	30
Operation	32
Electrical characteristics of contacts and control auxiliaries	33
<b>Start-up</b>	<b>36</b>
Start-up operations	36
What to do when the circuit breaker trips?	37
<b>Compact operating conditions</b>	<b>38</b>



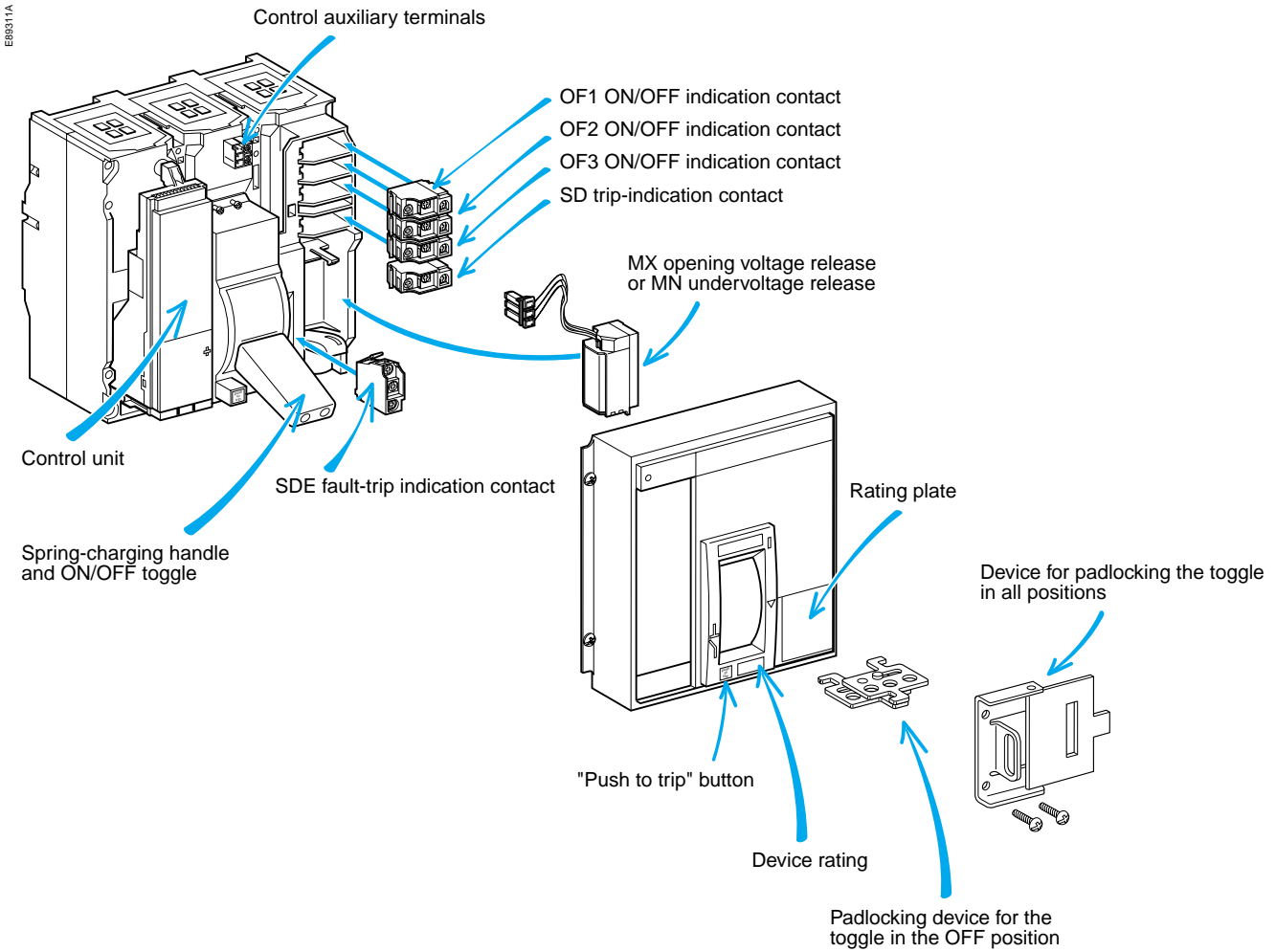
## Rating plate

E80310A



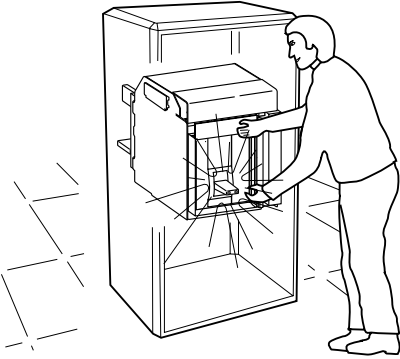
- Rated current (x 100 A)
- Performance level
- Suitability for isolation
- Type of device: circuit breaker or switch-disconnector
- Ui - rated insulation level
- Uimp - impulse withstand voltage
- Icu - ultimate breaking capacity
- Ue - rated operational voltage
- Ics - rated service breaking capacity
- Icw - rated short-time withstand current
- Standards





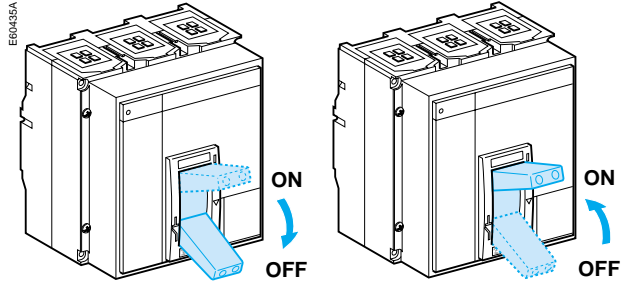
# Opening, closing, reset

E60436A

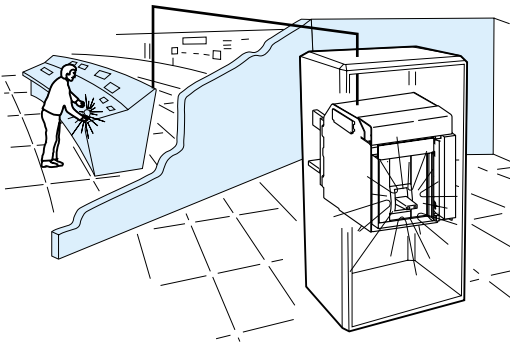


## Local opening and closing

■ OFF: breaker open, ON: breaker closed.



E60433A



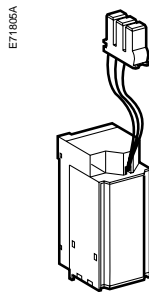
## Remote opening

Use either:

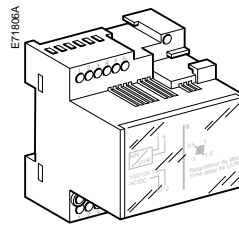
- an MX opening release
- an MN undervoltage release
- a delayed MN undervoltage release.

When connected to the control panel, these releases may be used to remotely open the device.

MX, MN

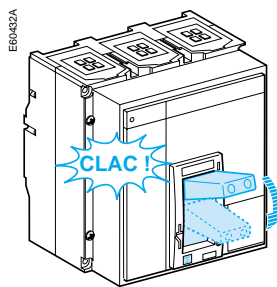


Delay unit

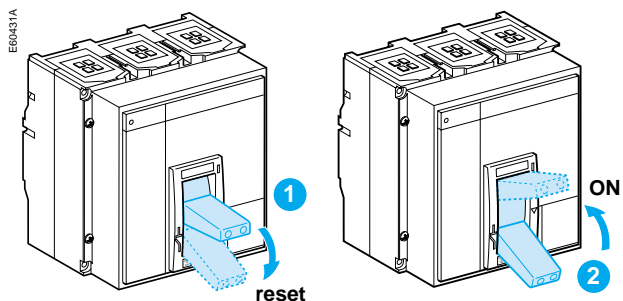


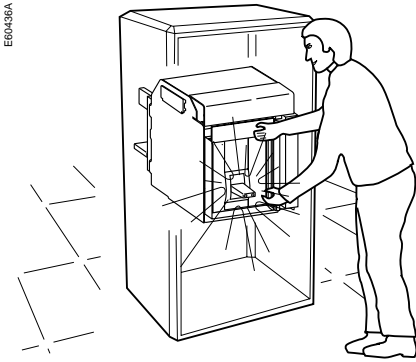
## Resetting the device following a trip

■ the device trips.

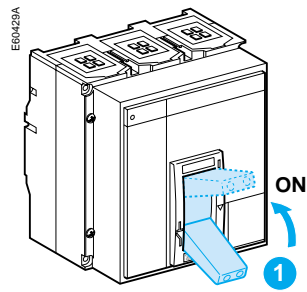


■ reset the device, then close it again.

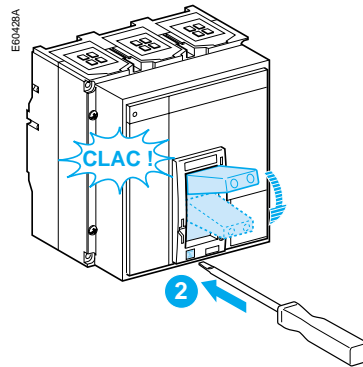




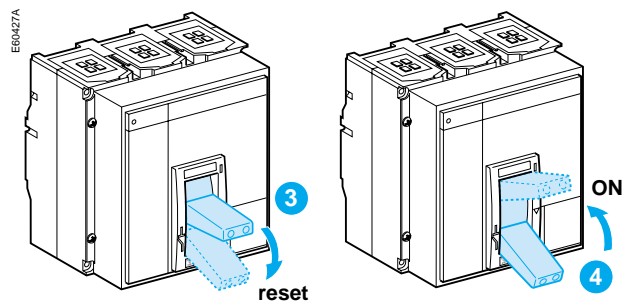
■ close the device.



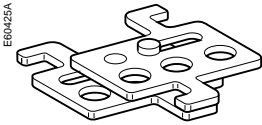
■ press the "Press to trip" button.



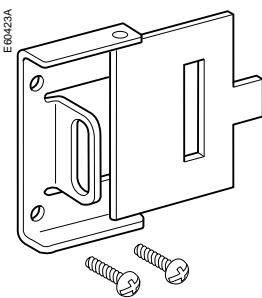
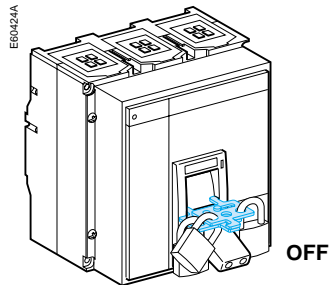
■ push the toggle down to reset the device, then back up close it again.



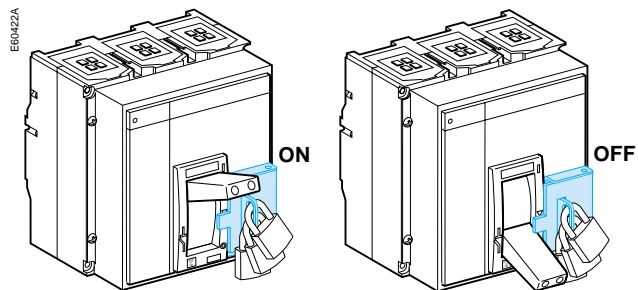
# Locking the toggle



Locking the toggle in the OFF position using one to three padlocks (shackle diameter 5 to 8 mm)



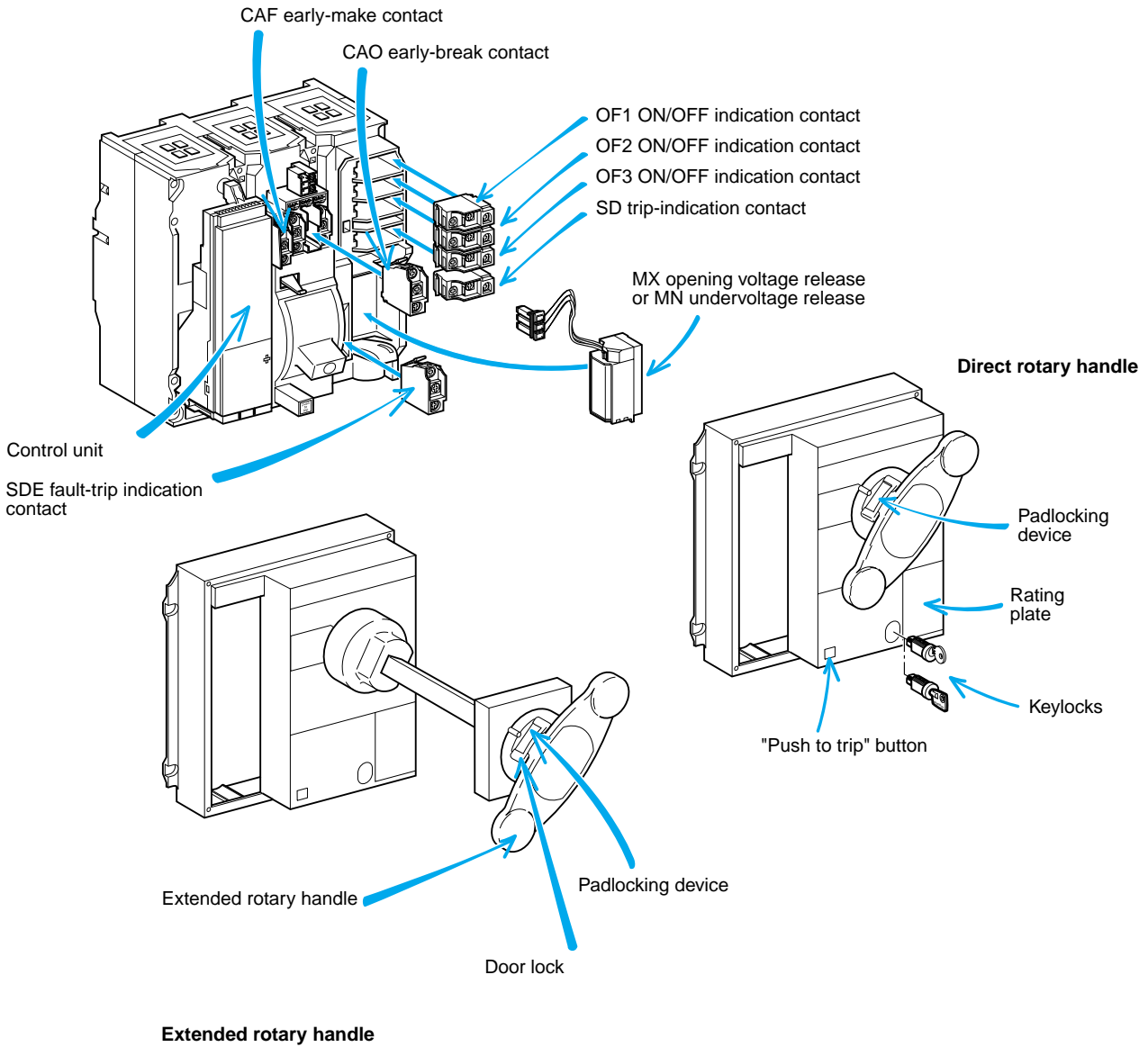
Locking the toggle in the ON or OFF position using one to three padlocks (shackle diameter 5 to 8 mm)



*Manually operated  
Compact with a rotary  
handle*

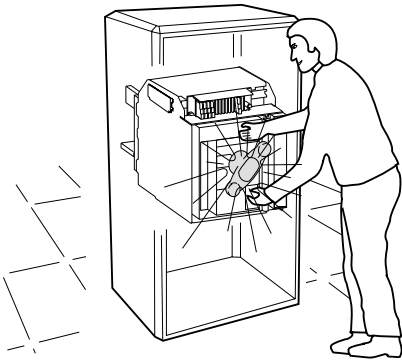
# Components

EB9312A



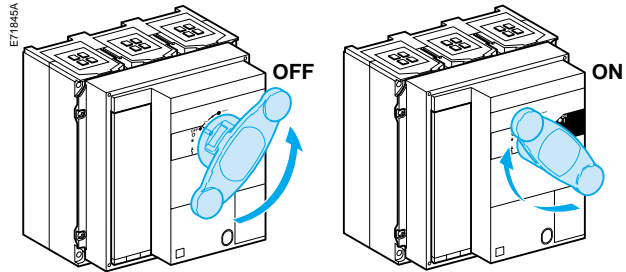
# Opening, closing, reset

E71844A

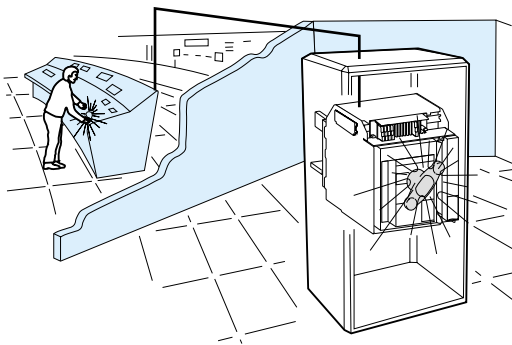


## Local opening and closing

■ OFF: breaker open, ON: breaker closed.



E71847A



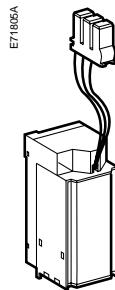
## Remote opening

Use either:

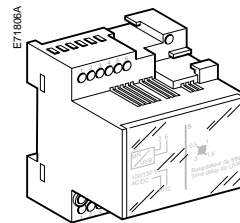
- an MX opening release
- an MN undervoltage release
- a delayed MN undervoltage release.

When connected to the control panel, these releases may be used to remotely open the device.

MX, MN

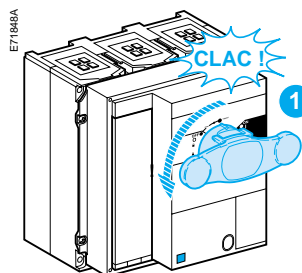


Delay unit

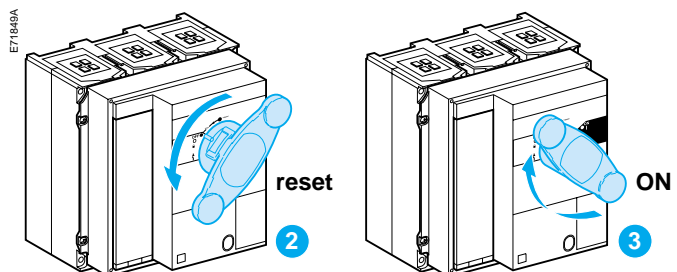


## Resetting the device following a trip

■ the device trips.

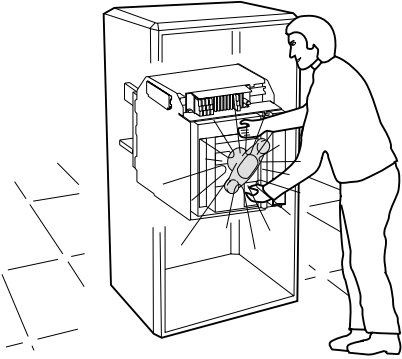


■ reset the device, then close it again.

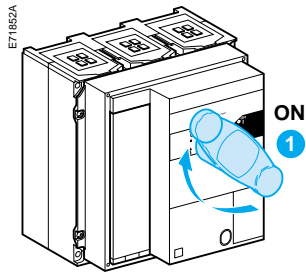


# Testing the device

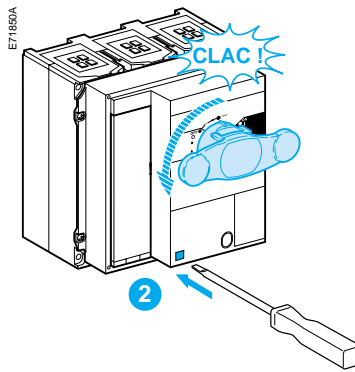
E71844A



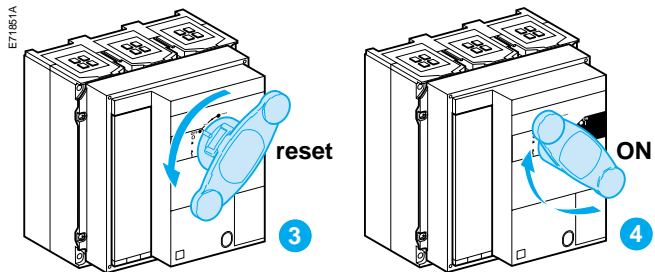
■ close the device.



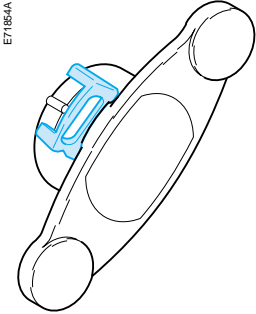
■ press the "Press to trip" button.



■ turn the handle to reset the device, then back to close it again.

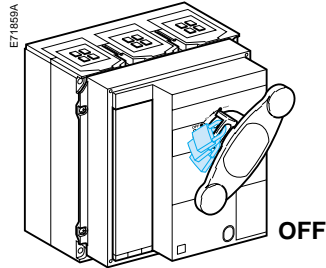


# Locking the rotary handle

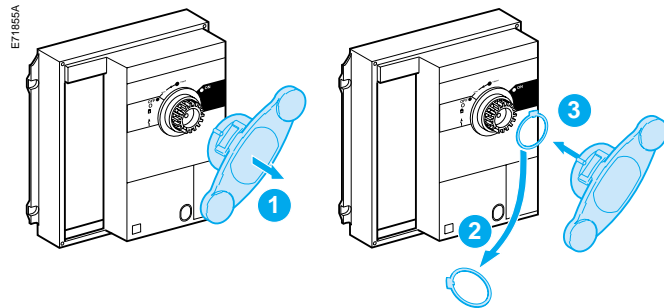


## Locking the direct or extended rotary handle in all positions using one to three padlocks (shackle diameter 5 to 8 mm)

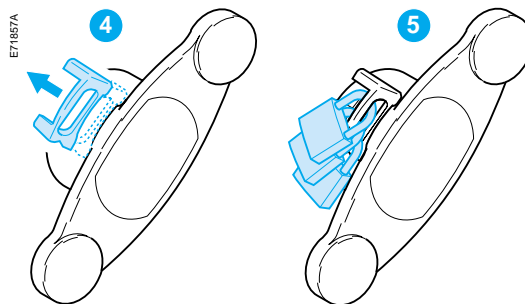
- in the standard configuration, the device may be locked in the OFF position.



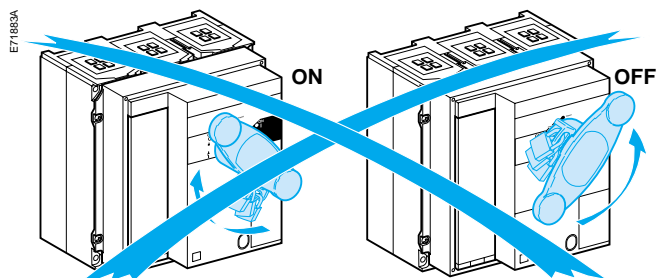
- remove the ring as indicated below to enable locking in both the ON and OFF positions.



- lock the handle.

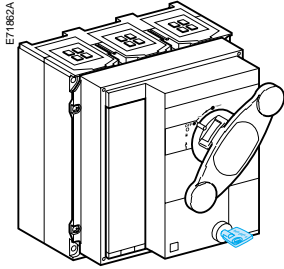


- the controls are locked.



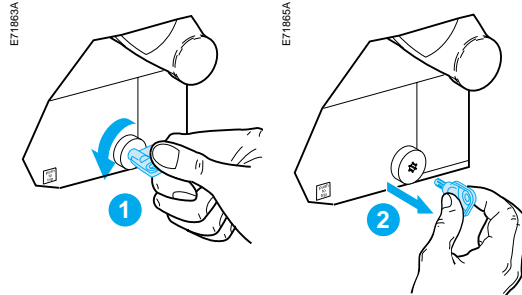
**Note:**  
the rotary handle can be equipped for locking by both padlocks and keylocks.

# Locking the rotary handle

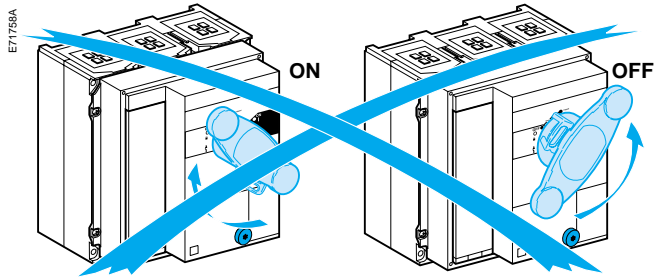


## Locking the direct rotary handle in all positions using a keylock

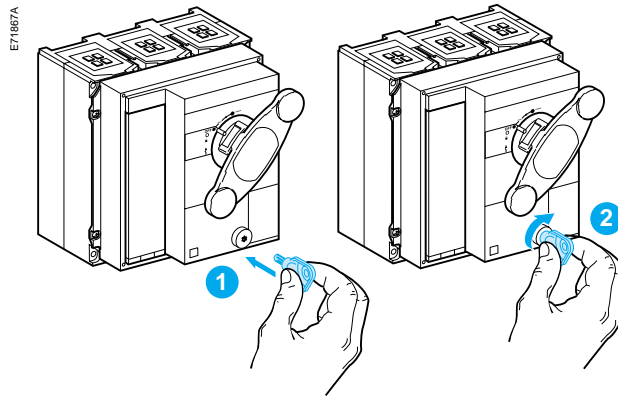
■ lock.



■ the controls are locked.

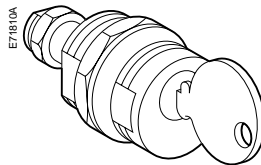


■ unlock.

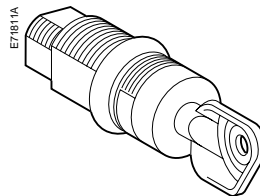


## Two types of keylocks are available

RONIS

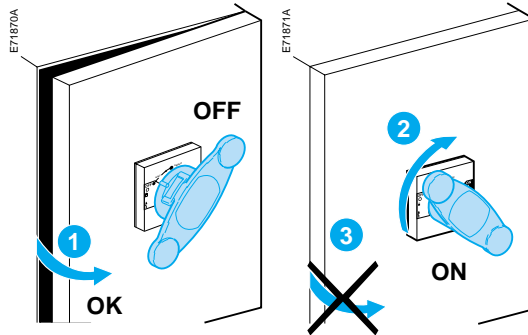


PROFALUX

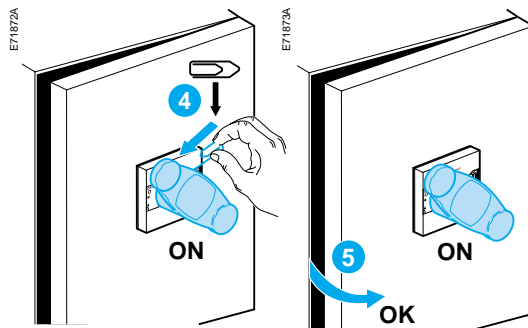


## Door locking when the device is in the ON position, using the extended rotary handle

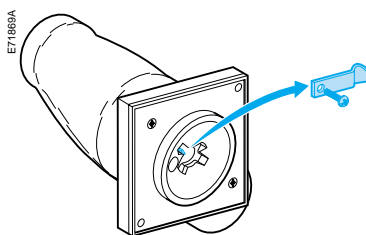
■ in the standard configuration, the door cannot be opened when the rotary handle is set to the ON position.



■ it is possible, however, to defeat the door lock.

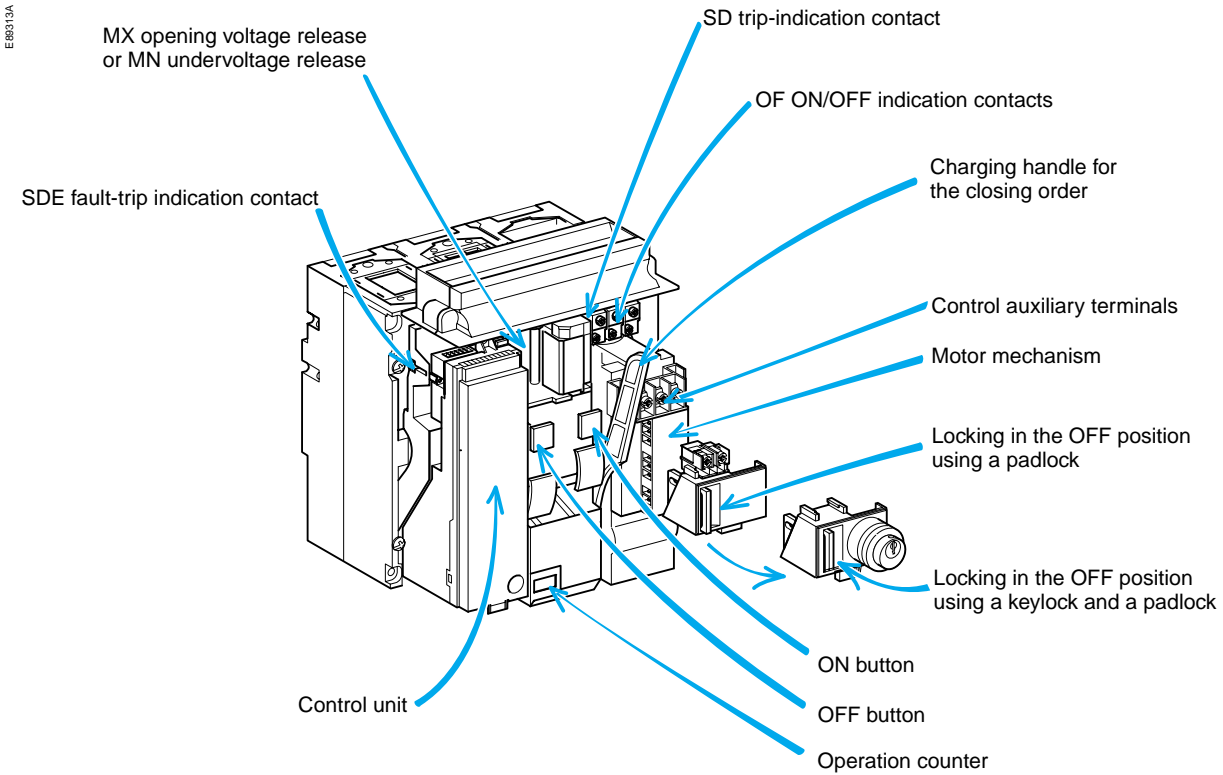


■ the door-lock function may be permanently disabled by removing the lock.

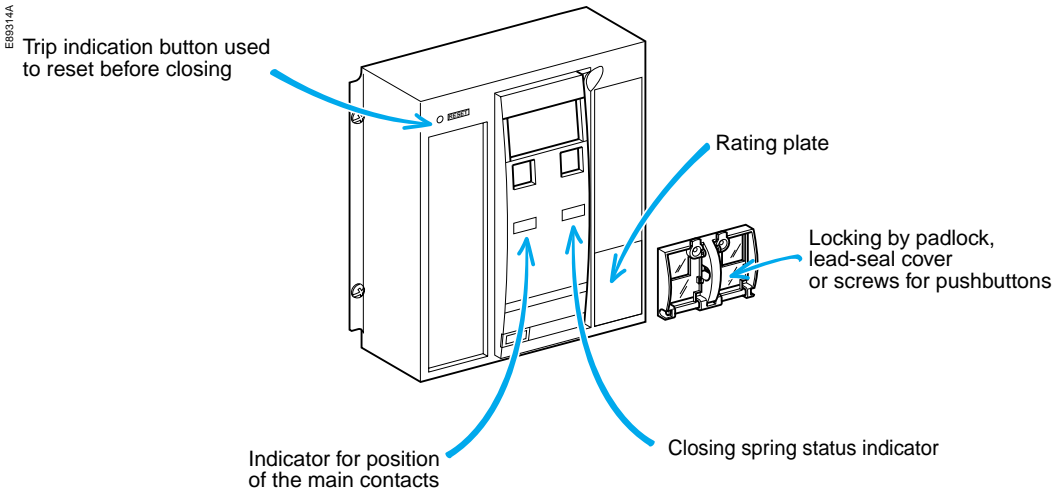


# Remote operated Compact Components

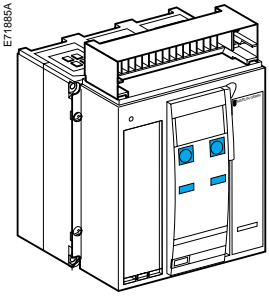
## Fixed device



## Front

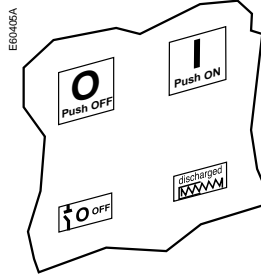


# Opening, closing, reset

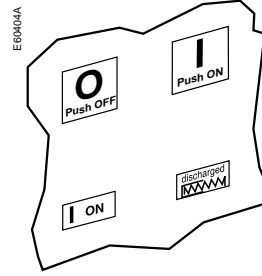


## Local opening and closing

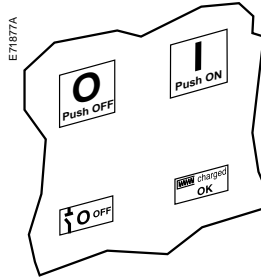
Device open (OFF),  
discharged



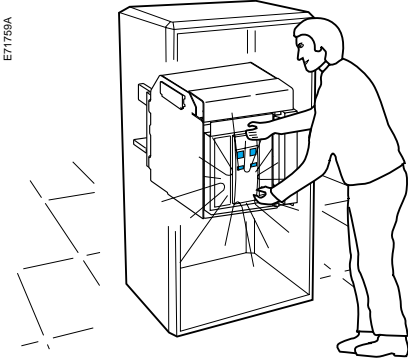
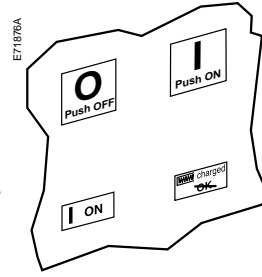
Device closed (ON),  
discharged

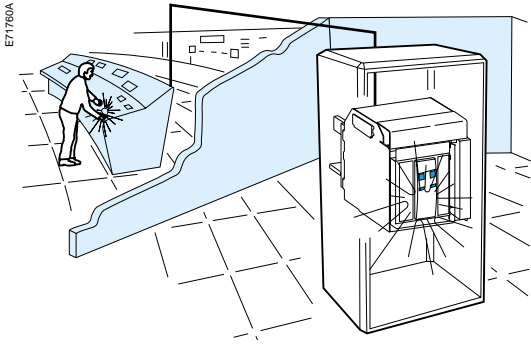


Device open (OFF),  
charged



Device closed (ON),  
charged





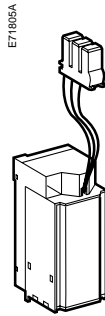
## Remote opening

Use either:

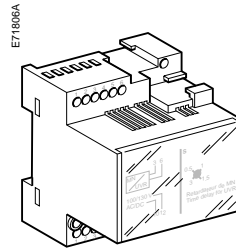
- an MX opening release
- an MN undervoltage release
- a delayed MN undervoltage release
- a motor mechanism.

When connected to the control panel, these releases may be used to remotely open the device.

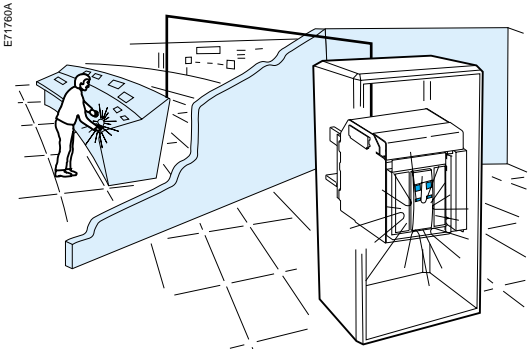
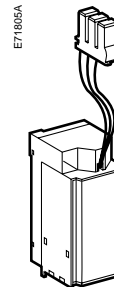
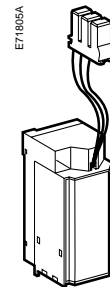
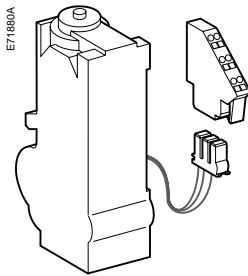
### MX, MN



### Delay unit

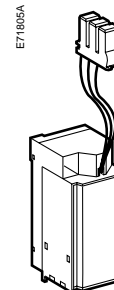
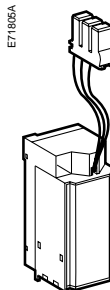
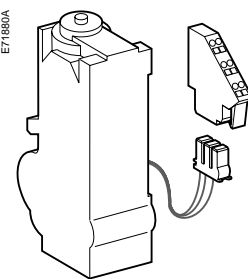


### Motor mechanism



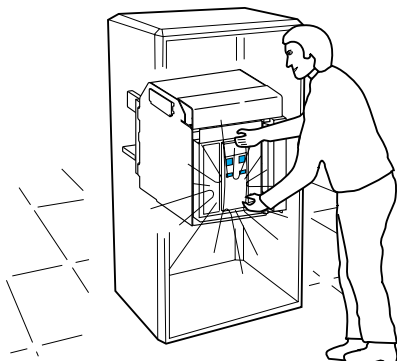
## Remotely close

### Motor mechanism



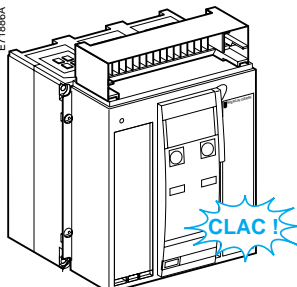
## Manually recharge the device following a trip

E71879A

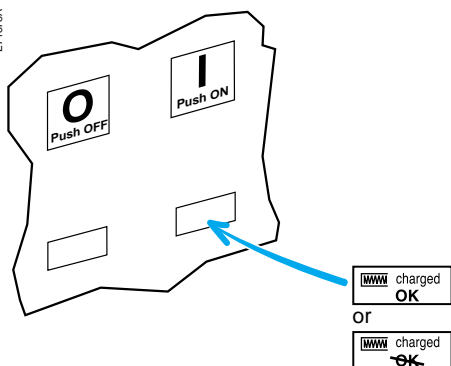


■ the device trips.

E71886A

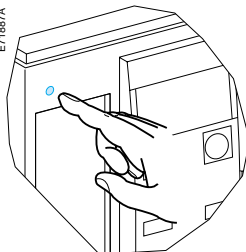


E71879A

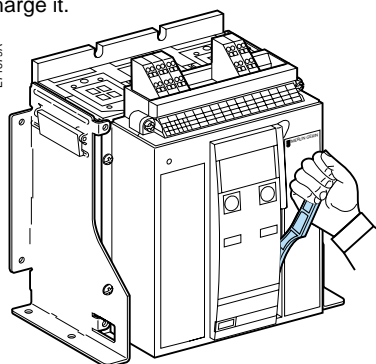


■ reset the device, then recharge it.

E71887A

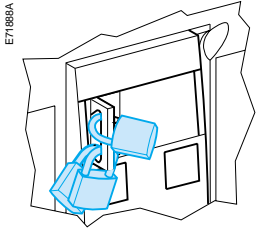


E71879A



# Remote operated Compact Locking the controls

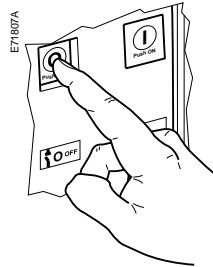
## Disabling local or remote closing



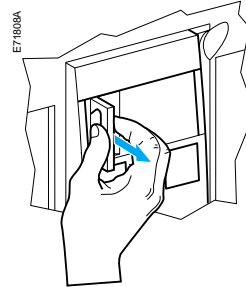
### Locking the device using one to three padlocks (shackle diameter 5 to 8 mm)

■ lock.

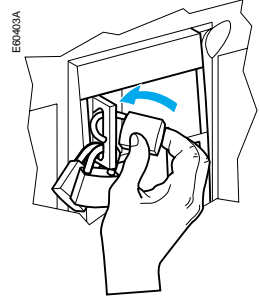
Open the device.



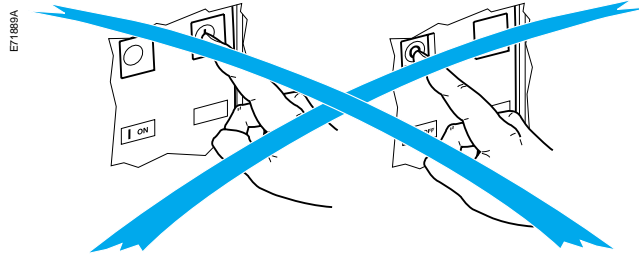
Pull out the tab.



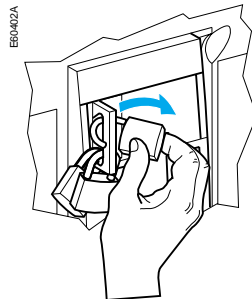
Install the padlock(s).



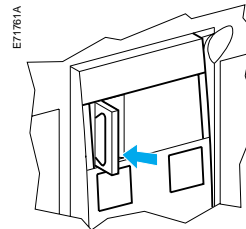
■ the controls are locked.



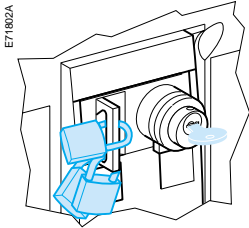
■ unlock.



■ push in the tab.



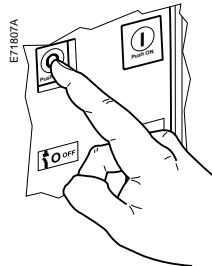
**Note.**  
Padlocks and keylocks may be used together.



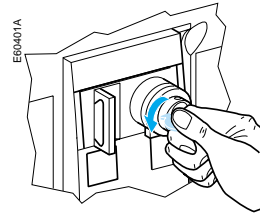
Padlocks and keylocks may be used together.  
Locking using padlocks is identical to the system on the previous page.

### Locking the device using a keylock and/or one to three padlocks (shackle diameter 5 to 8 mm)

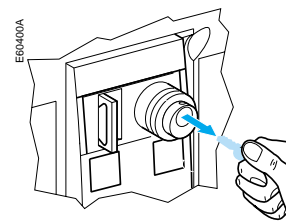
■ keylocking.  
Open the device.



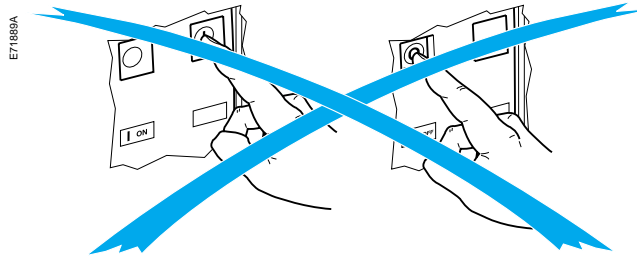
Turn the key.



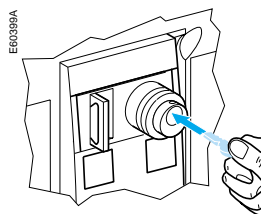
Remove the key.



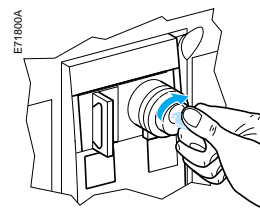
■ the controls are locked.



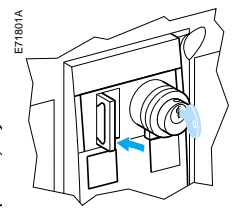
■ unlock.  
Insert the key.



Turn the key.

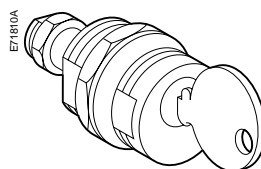


Push in the tab.

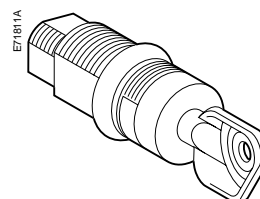


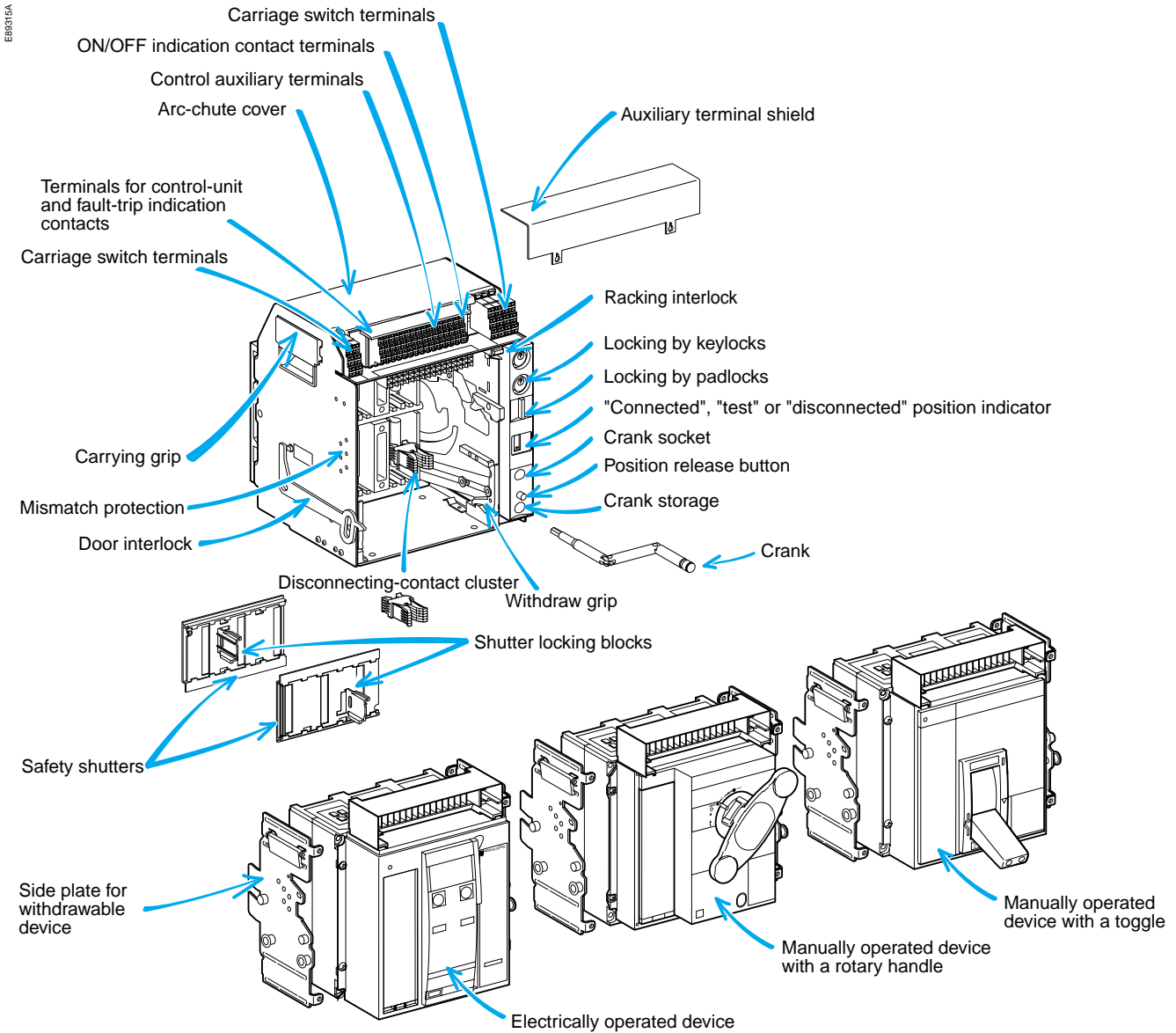
### Two types of keylocks are available

RONIS



PROFALUX





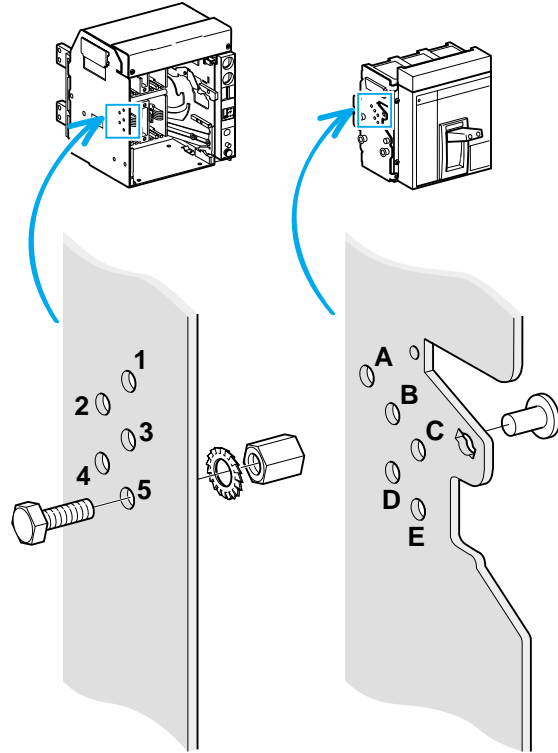
# Matching a device with its chassis

To set up a mismatch-prevention combination for the device and the chassis, see the mismatch-prevention installation manual.

The mismatch protection ensures that a device is installed only in a chassis with compatible characteristics.

The possible combinations are listed below.

EB64GBA



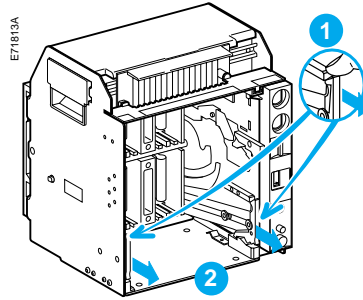
<b>ABC</b>	<b>45</b>	<b>BCD</b>	<b>15</b>
<b>ABD</b>	<b>35</b>	<b>BCE</b>	<b>14</b>
<b>ABE</b>	<b>34</b>	<b>BC</b>	<b>145</b>
<b>AB</b>	<b>345</b>	<b>BDE</b>	<b>13</b>
<b>ACD</b>	<b>25</b>	<b>BD</b>	<b>135</b>
<b>ACE</b>	<b>24</b>	<b>BE</b>	<b>134</b>
<b>AC</b>	<b>245</b>	<b>CDE</b>	<b>12</b>
<b>ADE</b>	<b>23</b>	<b>CD</b>	<b>125</b>
<b>AD</b>	<b>235</b>	<b>CE</b>	<b>124</b>
<b>AE</b>	<b>234</b>	<b>DE</b>	<b>123</b>

For complete information on Compact handling and mounting, see the installation manual(s).

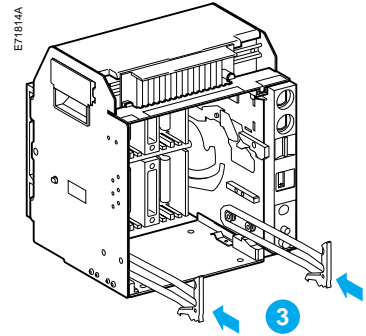
Before mounting Compact NS, make sure it matches the chassis.

## Removing the rails

Press the release tabs and pull the rails out.

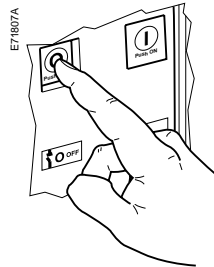


To put the rails back in, press the release tabs and push the rails in.

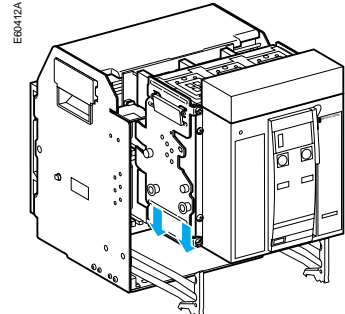


## Inserting the device

Open the circuit breaker (in any case, it opens automatically during connection).

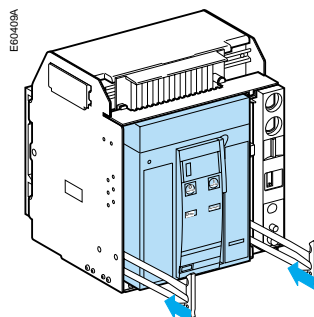
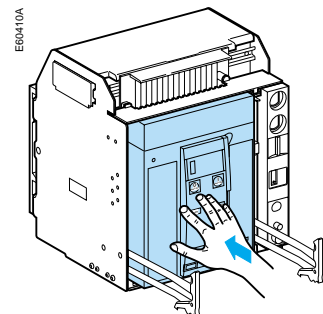
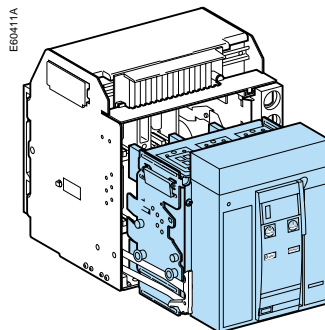


Position the circuit breaker on the rails. Check that it rests on all four supports.



If you cannot insert the device in the chassis, check that the mismatch protection on the chassis corresponds to that on the device.

Push the device into the chassis, taking care not to push on the control unit.



# Racking

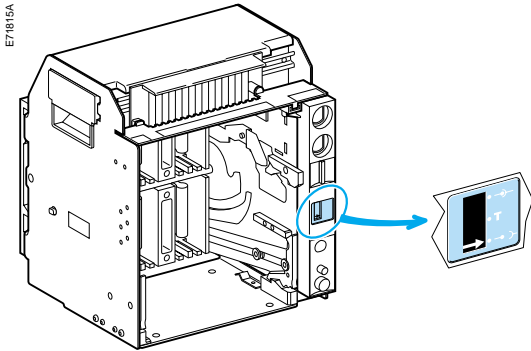
## Prerequisites

To connect and disconnect the device, the crank must be used.

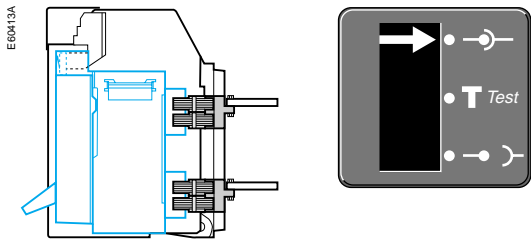
The locking systems, padlocks and the racking interlock all inhibit use of the crank.

The indicator on the front signals the position of the circuit breaker in the chassis.

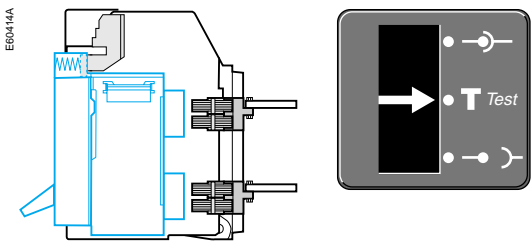
## Racking the circuit breaker from the "disconnected" to "test" position, then to "connected" position



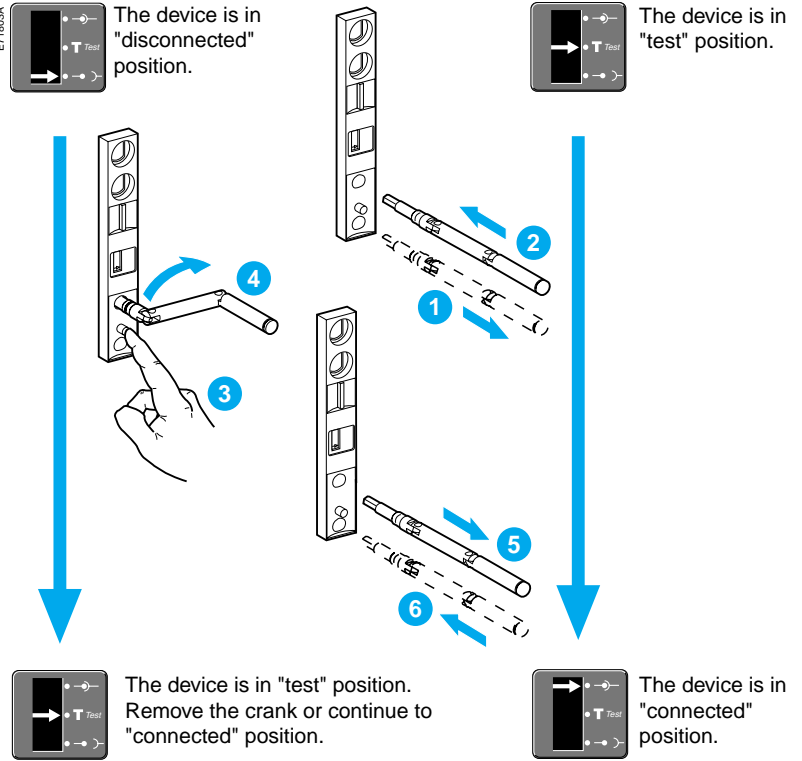
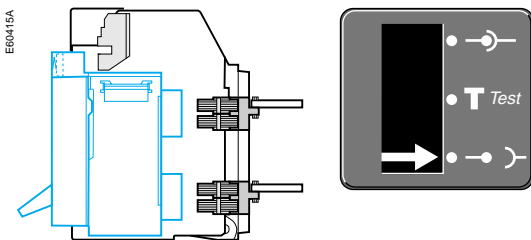
### "connected" position



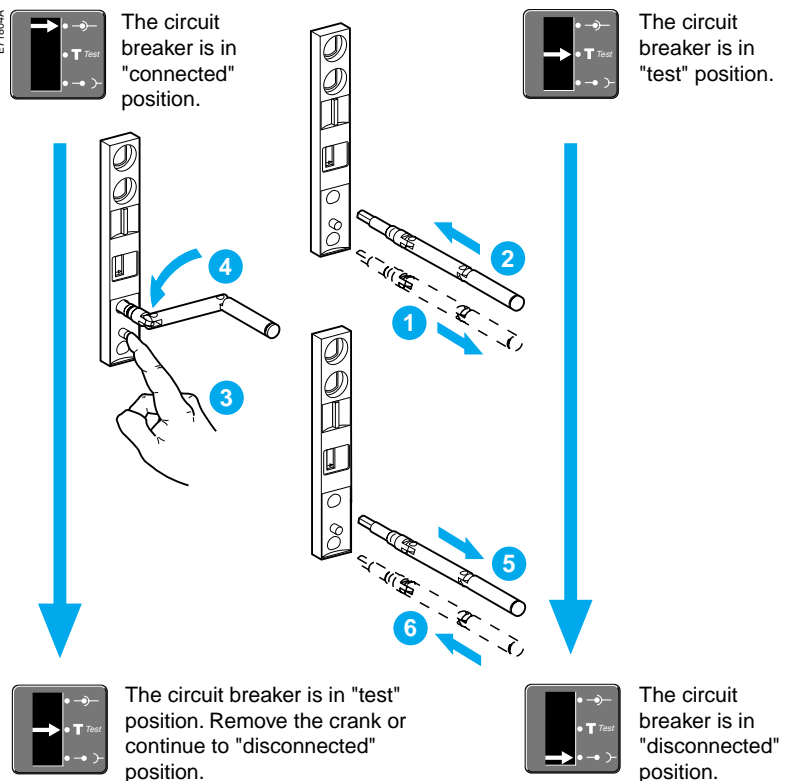
### "test" position



### "disconnected" position



## Withdrawing the circuit breaker from the "connected" to "test" position, then to "disconnected" position



**Note.** These operations require that all chassis-locking functions be disabled (see page 24).

# Locking in the "disconnected" position

## Using one to three padlocks

*Combination of locking systems.  
It is possible to lock the device on the chassis in the "disconnected" position using:*

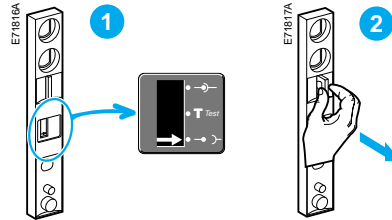
- one to three padlocks
- one or two keylocks
- a combination of both.

### Locking

Use padlocks with a maximum shackle diameter of 5 to 8 millimetres.

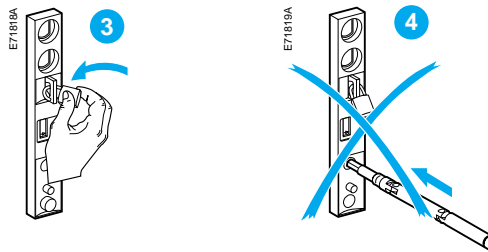
Device in "disconnected" position.

Pull out the tab.



Insert the shackle (max. diameter 5 to 8 mm) of the padlock(s).

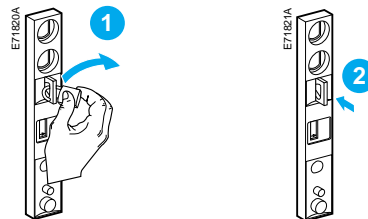
The crank cannot be inserted.



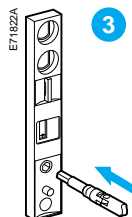
### Unlocking

Remove the padlock(s).

Release the tab.



The crank can be inserted.



**Note.**

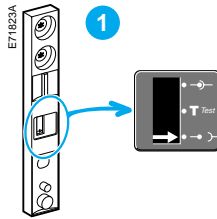
*Padlocks and keylocks may be used together. If specified when ordering the chassis, this locking function may be adapted to operate in all positions ("connected", "test" and "disconnected"), instead of in "disconnected" position alone.*

# Using one or two keylocks

## Locking

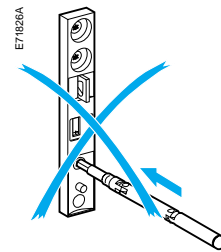
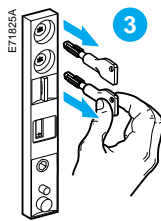
Device in "disconnected" position.

Turn the key(s).



Remove the key(s).

The crank cannot be inserted.

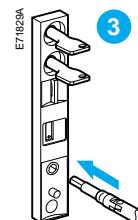
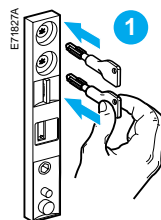


## Unlocking

Insert the key(s).

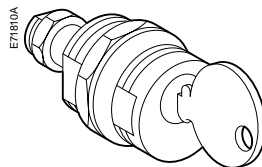
Turn the key(s).

The crank can be inserted.

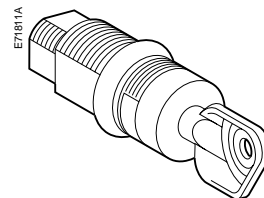


## Three types of keylocks are available.

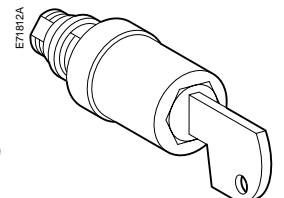
RONIS



PROFALUX

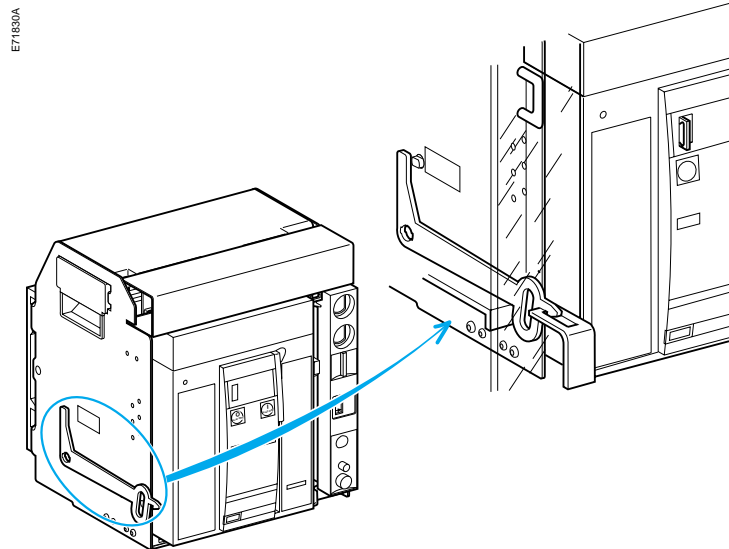


CASTELL



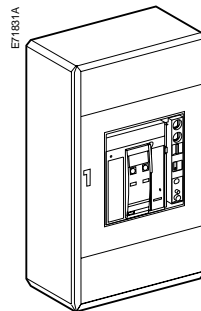
The locking device is installed on the left or right-hand side of the chassis.

- when the device is in "connected" or "test" position, the latch is lowered and the door is locked.
- when the device is in "disconnected" position, the latch is raised and the door is unlocked.

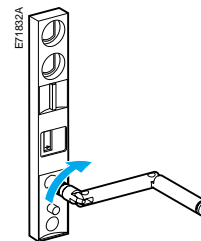


## Disabling door opening

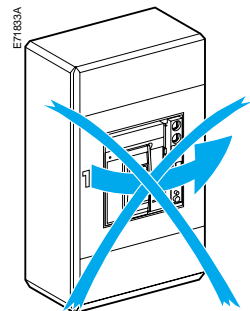
Close the door.



Turn the crank until the device is in "test" or "connected" position.

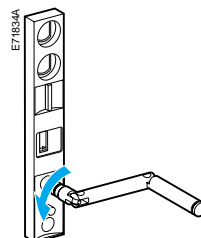


The door is locked.

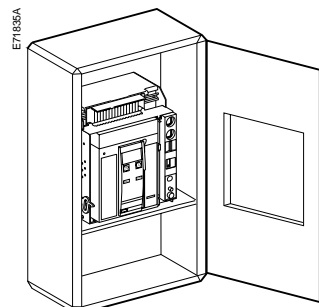


## Enabling door opening

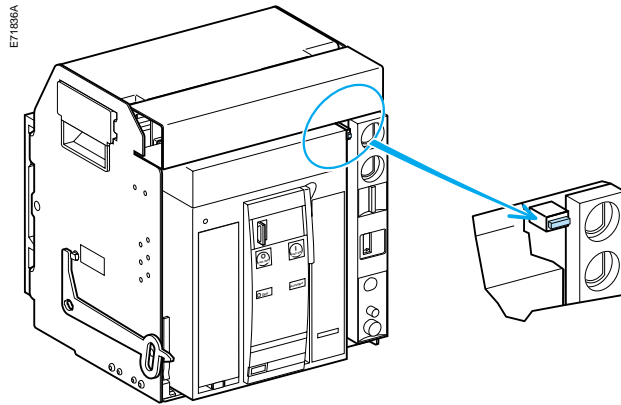
Turn the crank until the device is in "disconnected" position.



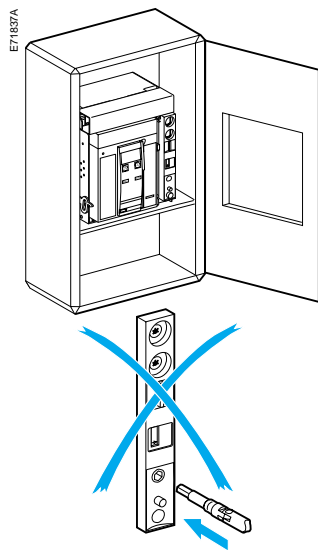
The door is unlocked.



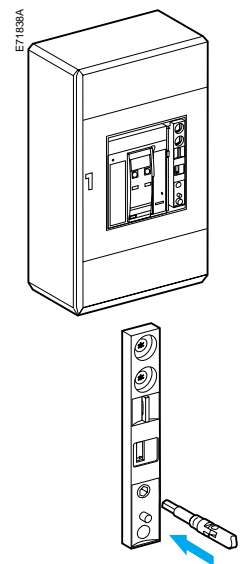
# Locking the device when the door is open



When the door is open,  
the crank cannot be inserted.



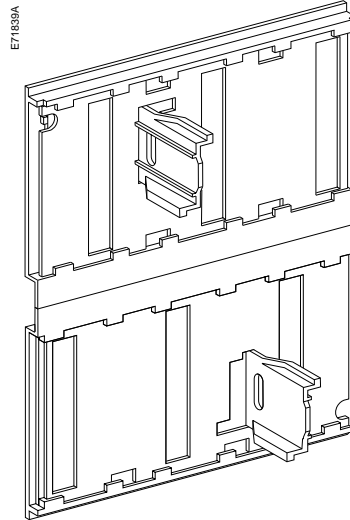
When the door is closed,  
the crank can be inserted.



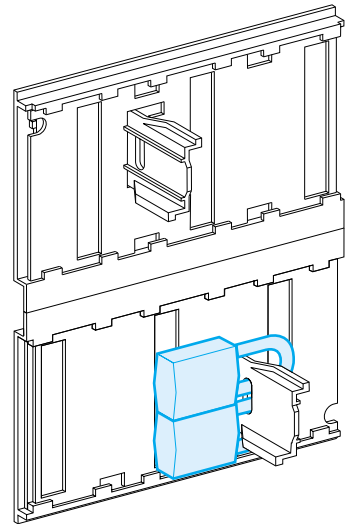
# Locking the safety shutters

Four locking possibilities inside the chassis using one or two padlocks (maximum shackle diameter 5 to 8 mm) for each shutter

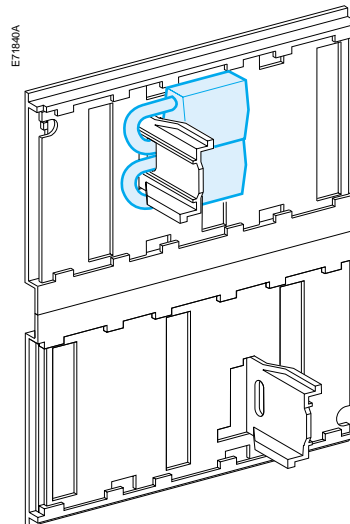
Top and bottom shutters not locked.



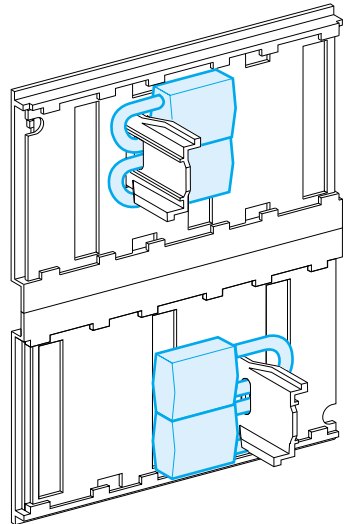
Top shutter not locked.  
Bottom shutter locked.



Top shutter locked.  
Bottom shutter not locked.

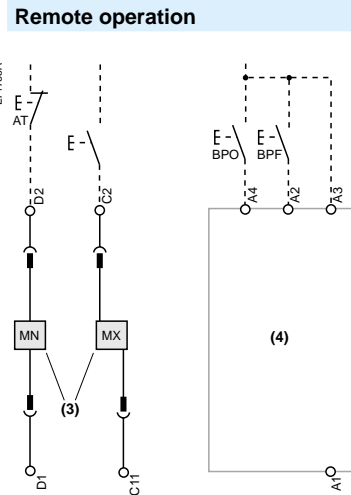
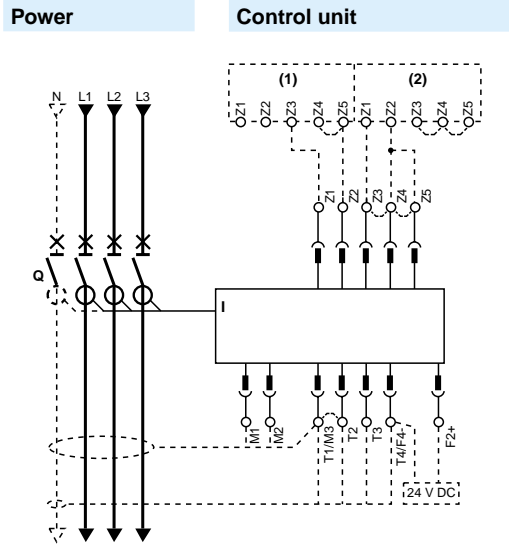


Top and bottom shutters locked.





The diagram is shown with circuits de-energised, all devices open, connected and charged and relays in normal position.



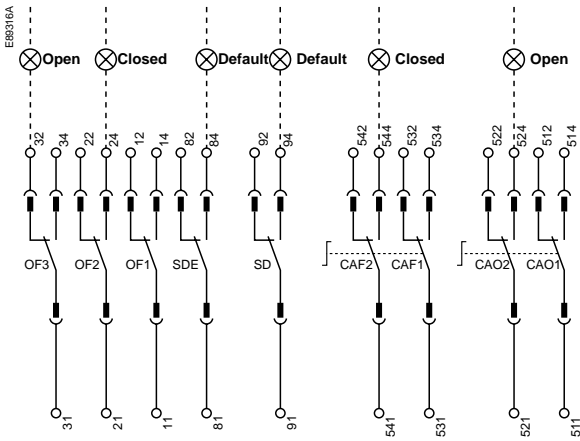
Com	UC1	UC2	UC3
E5 E6	Z5 M1	M2 M3	F2+
E3 E4	Z3 Z4	T3 T4	
E1 E2	Z1 Z2	T1 T2	F1 -

CAF2 / CAF1	SDE	SD
D2 / C12	A4	A2
		B4
D1 / C11		A1

A	P	H	Control unit	Remote operation
■	■	■	<b>Com:</b> E1-E6 communication	<b>SDE:</b> Fault-trip indication contact (supplied as standard)
■	■	■	<b>UC1:</b> Z1-Z5 zone selective interlocking; Z1 = ZSI = ZSI OUT SOURCE Z2 = ZSI OUT; Z3 = ZSI IN SOURCE Z4 = ZSI IN ST (short time) Z5 = ZSI IN GF (ground fault) M1 = Vigi module input (Micrologic 7)	<b>SD:</b> Trip-indication contact (supplied as standard)
■	■	■	<b>UC2:</b> T1, T2, T3, T4 = external neutral; M2, M3 = Vigi module input (Micrologic 7)	<b>MN:</b> Undervoltage release <b>or</b> <b>MX:</b> Shunt release (standard or communicating)
■	■	■	<b>UC3:</b> F2+, F1- external 24 V DC power supply VN external voltage connector	

A: Digital ammeter  
P: A + power meter + programmable protection  
H: P + harmonics

### Indication contacts



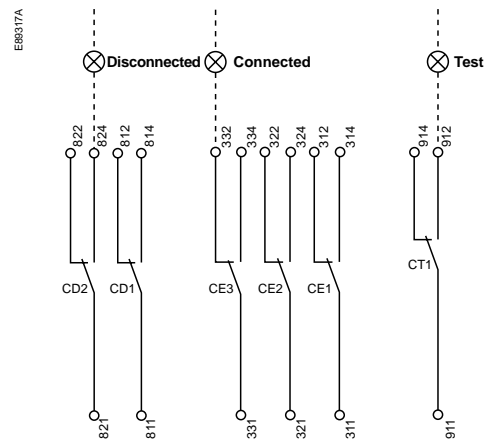
### Indication contacts

CAF1	CAF2	SDE	SD	CAO2	CAO1	OF3	OF2	OF1
544	534	84	94	544	514	34	24	14
542	532	82	92	522	512	32	22	12
542	531	81	91	521	511	31	21	11

### Indication contacts

OF3 / OF2 / OF1: ON/OFF indication contacts

### Chassis contacts



### Chassis contacts

CD2	CD1	CE3	CE2	CE1	CT1
824	814	334	324	314	914
822	812	332	322	312	912
821	811	331	321	311	911

### Chassis contacts

CD2: Disconnected-  
CD1 position  
contacts  
CE3: Connected-  
CE2 position  
CE1 contacts  
CT1: Test-position  
contacts

Key:



Withdrawable device only



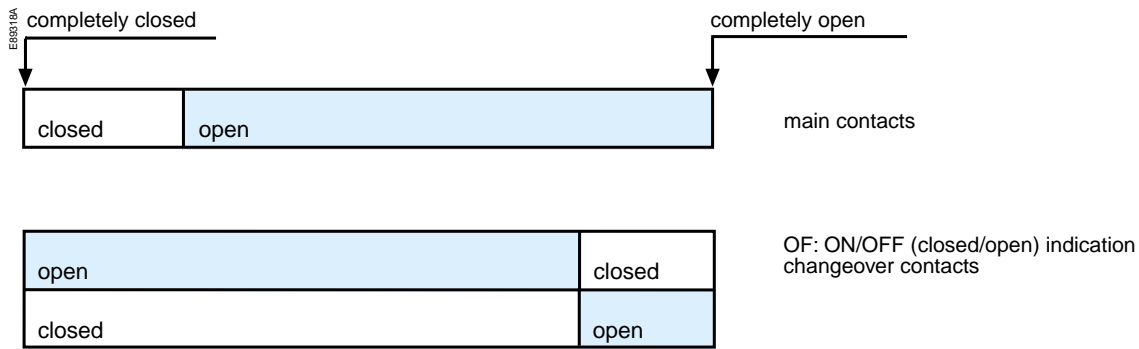
SDE1, OF1, OF2, OF3, OF4 supplied as standard



Interconnected connections  
(only one wire per connection point)

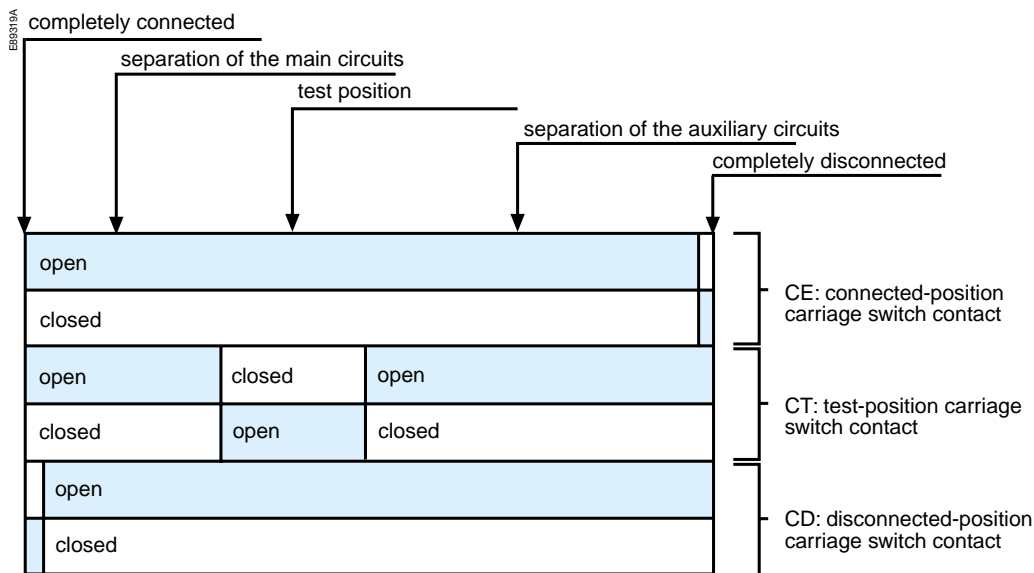
The ON/OFF indication contacts signal the status of the device main contacts.

### Device



The carriage switches indicate the "connected", "test" and "disconnected" positions.

### Chassis



# Electrical characteristics of contacts and control auxiliaries

## Device indication contacts

designation	type	standard, minimum current 100 mA 24 V			low level, minimum current 2 mA 15 V		
OF ON/OFF contact	3 changeover contacts breaking capacity (AC 12 / DC 12 as per 947-5-1)	V AC	240/380	6 A (rms)	V AC	24/48	5 A (rms)
			480	6 A (rms)		240	5 A (rms)
		V DC	690	6 A (rms)	V DC	380	5 A (rms)
			24/48	2.5 A		24/48	5 / 2.5 A
		125	0.5 A	125	0.5 A		
		250	0.3 A	250	0.3 A		
SD fault indication	1 changeover contact breaking capacity (AC 12 / DC 12 as per 947-5-1)	V AC	240/380	6 A (rms)	V AC	24/48	5 A (rms)
			480	6 A (rms)		240	5 A (rms)
		V DC	690	6 A (rms)	V DC	380	5 A (rms)
			24/48	2.5 A		24/48	5 / 2.5 A
		125	0.5 A	125	0.5 A		
		250	0.3 A	250	0.3 A		
SDE fault-trip indication for device with motor mechanism	1 changeover contact breaking capacity (AC 12 / DC 12 as per 947-5-1)	V AC	240/380	6 A (rms)	V AC	24/48	5 A (rms)
			480	6 A (rms)		240	5 A (rms)
		V DC	690	6 A (rms)	V DC	380	5 A (rms)
			24/48	2.5 A		24/48	5 / 2.5 A
		125	0.5 A	125	0.5 A		
		250	0.3 A	250	0.3 A		
CAO early-break switch for device with rotary handle	2 changeover contacts breaking capacity (AC 12 / DC 12 as per 947-5-1)	V AC	240/380	6 A (rms)	V AC	24/48	5 A (rms)
			480	6 A (rms)		240	5 A (rms)
		V DC	690	6 A (rms)	V DC	380	5 A (rms)
			24/48	2.5 A		24/48	5 / 2.5 A
		125	0.5 A	125	0.5 A		
		250	0.3 A	250	0.3 A		
CAF early-make switch for device with rotary handle	2 changeover contacts breaking capacity (AC 12 / DC 12 as per 947-5-1)	V AC	240/380	6 A (rms)	V AC	24/48	5 A (rms)
			480	6 A (rms)		240	5 A (rms)
		V DC	690	6 A (rms)	V DC	380	5 A (rms)
			24/48	2.5 A		24/48	5 / 2.5 A
		125	0.5 A	125	0.5 A		
		250	0.3 A	250	0.3 A		

## Device control auxiliaries

designation	power supply	threshold	consumption	response time
MX opening release	V AC: 50/60 Hz: 24/48 - 100/130 - 200/250 - 277 - 380/480 V DC: 12 - 24/30 - 48/60 - 100/130 - 200/250	0.7 to 1.1 Un	pick-up: 200 VA or W (80 ms) hold: 4.5 VA or W	device at Un: 50 ms ± 10
MN undervoltage release	V AC: 50/60 Hz: 24/48 - 100/130 - 200/250 - 380/480 V DC: 24/30 - 48/60 - 100/130 - 200/250	open: 0.35 to 0.7 Un close: 0.85 Un	pick-up: 200 VA or W (80 ms) hold: 4.5 VA or W	device at Un: 40 ms ± 10
Delay unit for undervoltage release	V AC: 50/60 Hz V DC not adjustable: 100/130 - 200/250 V DC adjustable: 48/60 - 100/130 - 200/250 - 380/480	open: 0.35 to 0.7 Un close: 0.85 Un	200 VA	device at Un: not adjustable: 0.25 s adjustable: 0.5 - 0.9 - 1.5 - 3 s

## Motor mechanism

designation	power supply	threshold	consumption and motor overcurrent	recharge time and operating rate
Motor mechanism	V AC: 50/60 Hz: 48/60 - 100/130 - 200/240 - 277 - 400/440 - 480 V DC: 24/30 - 48/60 - 100/125 - 200/250	0.85 to 1.1 Un	consumption: 180 VA or W overcurrent: 2 to 3 In for 0.1 s	3 seconds max. 3 cycles per minute

## "Connected", "test" and "disconnected" position carriage switches

designation	type	standard, minimum current 100 mA 24 V			low level, minimum current 2 mA 15 V		
CE, CT, CD	3 changeover contacts breaking capacity (AC 12 / DC 12 as per 947-5-1)	V AC	240	8 A (rms)	V AC	24/48	5 A (rms)
			380	8 A (rms)		240	5 A (rms)
		V DC	480	8 A (rms)	V DC	380	5 A (rms)
			690	6 A (rms)		24/48	2.5 A
		24/48	2.5 A	125	0.8 A		
		125	0.8 A	125	0.8 A		
		250	0.3 A	250	0.3 A		

# Electrical characteristics of contacts and control auxiliaries

## Wiring of control auxiliaries

Under pick-up conditions, the level of consumption is approximately 150 to 200 VA. Consequently, for low supply voltages (12, 24, 48 V), cables must not exceed a maximum length determined by the supply voltage and the cross-section of the cables.

### Indicative values for maximum cable lengths (in meters)

		12 V		24 V		48 V	
		2.5 mm <sup>2</sup>	1.5 mm <sup>2</sup>	2.5 mm <sup>2</sup>	1.5 mm <sup>2</sup>	2.5 mm <sup>2</sup>	1.5 mm <sup>2</sup>
<b>MN</b>	100% source voltage	—	—	58	36	280	165
	85% source voltage	—	—	16	10	75	45
<b>MX-XF</b>	100% source voltage	21	12	115	70	550	330
	85% source voltage	10	6	75	44	350	210

**Note.**

The indicated length is that for each of the two supply wires.



# Start-up operations Procedure

---

*These operations must be carried out before using a device for the first time.*

A general check of the device takes only a few minutes and avoids any risk of mistakes due to errors or negligence.

A general check must be carried out:

- prior to initial use
- following an extended period during which the device is not used.

A check must be carried out with the entire switchboard de-energised. In switchboards with compartments, only those compartments that may be accessed by the operators must be de-energised.

---

## Electrical tests

Insulation and dielectric-withstand tests must be carried out immediately after delivery of the switchboard. These tests are precisely defined by international standards and must be directed and carried out by a qualified expert.

Prior to running the tests, it is absolutely necessary to:

- disconnect all the electrical auxiliaries of the device (MCH, MX, MN)
- remove the long-time rating plug on the 7.0 A control units.

Removal of the rating plug disconnects the voltage measurement input.

---

## Switchboard inspection

Check that the devices are installed in a clean environment, free of any installation scrap or items (tools, electrical wires, broken parts or shreds, metal objects, etc.).

---

## Conformity with the installation diagram

Check that the devices conform with the installation diagram:

- breaking capacities indicated on the rating plates
- identification of the control unit (type, rating)
- presence of any optional functions (motor mechanism)
- protection settings (long time, short time, instantaneous, ground fault)
- identification of the protected circuit marked on the front of each device.

---

## Condition of connections and auxiliaries

Check device mounting in the switchboard and the tightness of power connections.

Check that all auxiliaries and accessories are correctly installed:

- electrical auxiliaries
- terminal blocks
- connections of auxiliary circuits.

---

## Operation

Check the mechanical operation of the devices:

- opening of contacts
- closing of contacts.

---

## Check on the control unit

Check the control unit of each circuit breaker using the respective user manuals.

# What to do when the circuit breaker trips?

---

## Note the fault

Faults are signalled locally and remotely by the indicators and auxiliary contacts installed on devices (depending on each configuration). See page 32 in this manual and the user manual of the control unit for information on the fault indications available with your circuit breaker.

---

## Identify the cause of tripping

A circuit must never be reclosed (locally or remotely) before the cause of the fault has been identified and cleared.

Depending on the type of fault and the criticality of the loads, a number of precautionary measures must be taken, in particular the insulation and dielectric tests on a part of or the entire installation. These checks and test must be directed and carried out by qualified personnel.

---

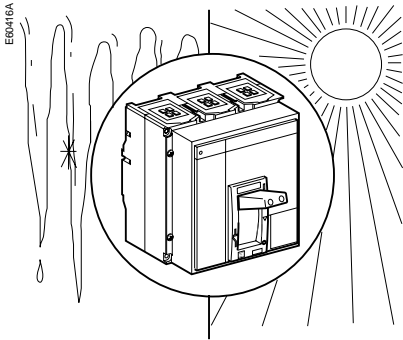
## Inspect the circuit breaker following a short-circuit

- check the tightness of connections (see the device installation manual)
- check the disconnecting-contact clusters.

---

## Reset the circuit breaker

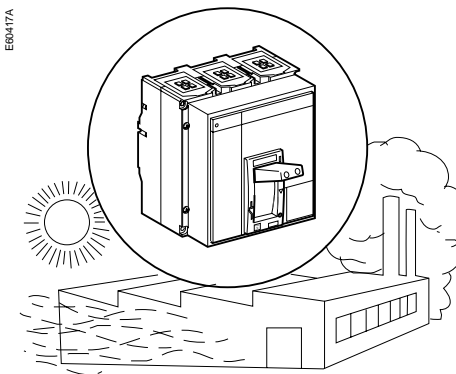
The circuit breaker can be reset locally or remotely. See pages 5, 9 and 15 in this manual for information on how the device can be reset.



## Ambient temperature

Compact devices can operate under the following temperature conditions:

- the electrical and mechanical characteristics are stipulated for an ambient temperature of  $-5^{\circ}\text{C}$  to  $+70^{\circ}\text{C}$
- circuit-breaker closing is guaranteed down to  $-35^{\circ}\text{C}$
- Compact (without the control unit) can be stored in an ambient temperature of  $-40^{\circ}\text{C}$  to  $+85^{\circ}\text{C}$
- the control unit can be stored in an ambient temperature of  $-25^{\circ}\text{C}$  to  $+85^{\circ}\text{C}$ .



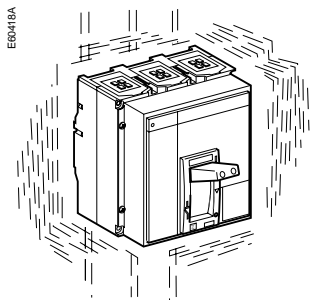
## Extreme atmospheric conditions

Compact devices have successfully passed the tests defined by the following standards for extreme atmospheric conditions:

- IEC 68-2-1: dry cold at  $-55^{\circ}\text{C}$
- IEC 68-2-2: dry heat at  $+85^{\circ}\text{C}$
- IEC 68-2-30: damp heat (temperature  $+55^{\circ}\text{C}$ , relative humidity 95%)
- IEC 68-2-52 level 2: salt mist.

Compact devices can operate in the industrial environments defined by standard IEC 947 (pollution degree up to 3).

It is nonetheless advised to check that the devices are installed in suitably cooled switchboards without excessive dust.



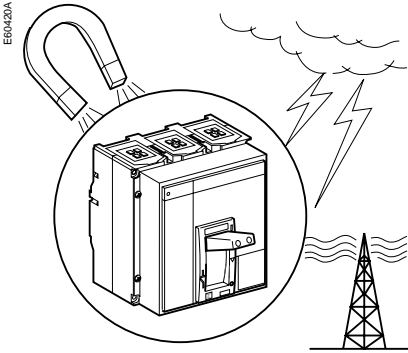
## Vibrations

Compact devices resist electromagnetic or mechanical vibrations.

Tests are carried out in compliance with standard IEC 68-2-6 for the levels required by merchant-marine inspection organisations (Veritas, Lloyd's, etc.):

- 2 to 13.2 Hz: amplitude  $\pm 1\text{ mm}$
- 13.2 to 100 Hz: constant acceleration 0.7 g.

Excessive vibration may cause tripping, breaks in connections or damage to mechanical parts.



## Electromagnetic disturbances

Compact devices are protected against:

- overvoltages caused by devices that generate electromagnetic disturbances
- overvoltages caused by an atmospheric disturbance or by a distribution-system outage (e.g. failure of a lighting system)
- devices emitting radio waves (radios, walkie-talkies, radar, etc.)
- electrostatic discharges produced by users.

Compact devices have successfully passed the electromagnetic-compatibility tests (EMC) defined by the following international standards:

- IEC 947-2, appendix F
- IEC 947-2, appendix B (trip units with earth-leakage function).

The above tests guarantee that:

- no nuisance tripping occurs
- tripping times are respected.

---

**Schneider Electric Industries SA**

Postal address  
5, rue Nadar  
92506 Rueil-Malmaison Cedex  
France  
Tel: +33 (0)1 41 29 82 00  
Fax: +33 (0)1 47 51 80 20

<http://www.schneider-electric.com>  
51201640AA-A

Due to the evolution in standards and in materials, the information contained in the text and illustrations are not guaranteed and require confirmation from the relevant departments



This document has been printed on ecological paper

Layout by: HeadLines  
Printed by: